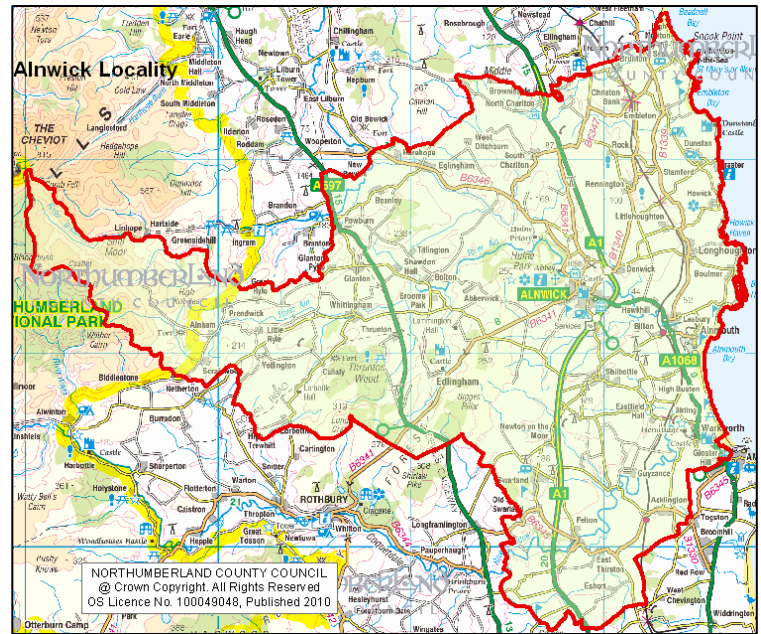


Alnwick locality lies in the North Service Area of Northumberland and has a population of 20,849. It measures 530 km² in terms of area (the fourth largest locality in Northumberland), and has a population density of 39 people per km². Alnwick locality includes the town of Alnwick and Alnwick and Warkworth Castles as well as The Alnwick Garden.

This data is a snapshot of Alnwick. For detailed statistics, the most up to date information and sheets explaining how each indicator has been calculated see the InfoNorthumberland Interactive Area Profiles:

www.northumberlandinfonet.org.uk/area_profiles/.

To access this profile in another format please contact the InfoNet using the details at the bottom of the page.



Key Issues for Alnwick Locality

People & Place

- 16.7% of the population are aged 0-15 years (North Northumberland 15.9%, Northumberland 17.4%).
- Between 2005–2007 the number in this age group fell by 1.4%.

Community Involvement & Cohesion

- 54.2% of people believe local public services act on the concerns of local residents (North Northumberland 47.5%, Northumberland 44.2%).
- 35.7% of people (during previous 12 months) had given help to a club(s), group(s) or organisation(s), (North Northumberland 29.5%, Northumberland 24.9%).

Economic Well-being

- The largest percentage of people aged 16-74 are employed in retail (13.4%), public administration and defence (13.2%) and health and social work (13.0%).

Housing

- 52.0% of private dwellings are classified as non decent (North Northumberland 50.2%, Northumberland 40.9%).
- 14.9% of private dwellings are in a state of disrepair (North Northumberland 13.2%, Northumberland 10.4%).
- 30.9% of all dwellings are fall into council tax 'Band A' (North Northumberland 39.2%, Northumberland 48.1%).
- 90.0% of households have residents (North Northumberland 90.6%, Northumberland 94.7%).
- 31.8% of household spaces are detached (North Northumberland 28.8%, Northumberland 24.6%).
- 60.6% of all households are owner occupied (North Northumberland 64.1%, Northumberland 67.1%).

Transport & Services

- 29.0% of people travel less than 2km to work (North Northumberland 26.7%, Northumberland 21.3%).
- 36.3% of people are satisfied with local bus services (North Northumberland 41.2%, Northumberland 45.4%).
- 35.7% of people are satisfied with local transport information (North Northumberland 37.3%, Northumberland 41.3%).

Community Safety

- There were 144.5 incidents of anti social behaviour per 1000 population between July 2008 and June 2009 (North Northumberland 68.7%, Northumberland 78.6%).
- There were 17.1 incidents of criminal damage per 1000 population between July 2008 and June 2009 (North Northumberland 10.4%, Northumberland 14.5%).
- 22.3% of all criminal damage was criminal damage to a building other than a dwelling (North Northumberland 17.7%, Northumberland 13.1%).

Health & Social Well-being

- 63.7% of people are satisfied with their local dentist (North Northumberland 68.3%, Northumberland 72.4%).

Culture & Leisure

- 11.7% of people are active library users (North Northumberland 15.2%, Northumberland 17.0%).

Alnwick Locality Profile

	Locality	North	N/land		Locality	North	N/land
Population¹				Economically Active	9,471	40,157	145,205
All People	20,849	88,447	310,619	65.5%	63.4%	64.6%	
Males	10,156	43,637	152,109	Economically Inactive	4,990	23,140	79,474
Females	10,693	44,810	158,510	34.5%	36.6%	35.4%	
All People 0 to 15 Years	3,489	14,078	54,085	Employment by Industry:			
16.7%	15.9%	17.4%	Agriculture; hunting; forestry	591	2,426	4,778	
All People Working Age (16-64 Males, 16-59 Females)	12,198	52,003	187,083	6.6%	6.4%	3.5%	
58.5%	58.8%	60.2%	Fishing	23	135	201	
All People 65+ Males/60+ Females	5,162	22,366	69,451	0.3%	0.4%	0.1%	
24.8%	25.3%	22.4%	Mining & quarrying	98	399	1,154	
Area (km²)	530	2455	5,078	1.1%	1.1%	0.8%	
Population Density (pop/km²)	39	36	61	793	4,115	19,711	
				Manufacturing	8.9%	10.9%	14.5%
				65	295	1,260	
				0.7%	0.8%	0.9%	
				584	2,778	9,860	
				Construction	6.5%	7.3%	7.2%
				1,195	5,767	20,889	
				13.4%	15.3%	15.4%	
				Wholesale & retail trade	601	2,597	7,270
				Hotels and catering	6.7%	6.9%	5.3%
				355	1,813	7,699	
				4.0%	4.8%	5.7%	
				Transport storage and comms.	164	809	3,812
				1.8%	2.1%	2.8%	
				Financial intermediation	917	3,522	12,754
				10.3%	9.3%	9.4%	
				Real estate	1,180	3,267	11,373
				13.2%	8.6%	8.4%	
				Public admin. and defence	791	3,163	10,517
				8.9%	8.4%	7.7%	
				Education	1,163	4,963	18,686
				13.0%	13.1%	13.7%	
				Health and social work	8,932	37,791	136,083
				All people (16-74) in employment			
Community Cohesion²				Housing⁶			
% of people agreeing people from different backgrounds get on well together	82.3%	80.9%	80.5%	Average House Price (£)	£219,923	£207,956	£179,852
% of people who feel strongly they belong to their immediate neighbourhood	74.5%	72.6%	68.5%	Households With Residents	8,647	37,263	130,780
% of people who believe they can influence decisions affecting their local area	34.8%	30.3%	28.1%	90.0%	90.6%	94.7%	
% of people over the last 12 months who have given unpaid help at least once a month	35.7%	29.5%	24.9%	508	1,916	2,389	
				Second Residence / Holiday Accommodation	5.3%	4.7%	1.7%
				457	1,956	4,895	
				4.8%	4.8%	3.5%	
				Vacant Households	3,054	11,838	33,940
				31.8%	28.8%	24.6%	
				Detached, Whole House or Bungalow	3,156	14,053	49,496
				32.8%	34.2%	35.9%	
				Semi-detached, Whole House or Bungalow	2,383	11,229	39,943
				24.8%	27.3%	28.9%	
				Terraced (including end terrace), Whole House or Bungalow	1,006	3,940	14,489
				10.5%	9.6%	10.5%	
				Flat, Maisonette or Apartment	17	74	196
				0.2%	0.2%	0.1%	
				Caravan or other mobile or temporary structure	9,612	41,135	138,064
				All Household Spaces	90.9%	90.3%	90.2%
				People satisfied with their home as a place to live			
Community Safety³				Education⁷			
% who feel people not treating each other with respect and consideration is a big problem	15.1%	20.8%	26.8%	Pupils gaining 5 or more GCSE's grades A* to C	68.6%	74.4%	68.8%
Anti Social Behaviour (rate per 1,000 pop)	144.5	68.7	78.6	Pupils gaining 5 or more GCSE's grades A* to G	95.9%	96.5%	93.3%
Teenagers hanging around on the streets is a big problem	22.4%	30.5%	37.9%	People with No Qualifications	4,006	19,371	70,263
People using / dealing drugs is a big problem	14.2%	26.9%	28.9%	27.7%	30.6%	31.3%	
People drunk / rowdy in public spaces is a big problem	15.7%	23.1%	24.6%	All Students in Higher Education	749	2792	9,402
% people who feel very or fairly safe outside after dark	79.4%	72.7%	64.1%	Males:	41.5%	40.0%	39.2%
				Females:	58.5%	60.0%	60.8%
Health⁴							
People who think their general health is good / very good	75.5%	74.1%	73.0%				
% satisfied with their GP	87.5%	86.8%	86.1%				
% satisfied with their local hospital	81.2%	73.5%	75.6%				
% satisfied with their local dentist	63.7%	68.3%	72.4%				
Economic Well-Being⁵							
IMD Employment Domain - % Pop. Employment Deprived	1,858	9,091	38,429				
8.9%	10.4%	12.4%					
IMD Income Domain - % Pop. Income Deprived	2,238	10,787	43,172				
10.8%	12.4%	14.0%					
IMD IDACI - Children 0-15 in Income Deprived households	436	2,265	10,313				
12.4%	15.6%	18.7%					
IMD IDAOPI - % pop. 60+ Income Deprived	872	3919	12,626				
15.4%	16.2%	16.6%					
Unemployment Statistics (April 2009)	351	1,645	7,708				
2.9%	3.2%	4.1%					

Version 1 03/2010

1) Population – Population figures are taken from the Mid-Year population estimates 2007.

Area - km² - calculated by the InfoNet

2) Community Cohesion – data is taken from the Place Survey 2008. For full definitions and data see www.northumberlandinfonet.org.uk/stronger_communities/consultation/

3) Community Safety – anti-social behaviour calculated by the InfoNet. For more information on our work on crime and community safety contact myra.jamieson@northumberland.gov.uk

All other data taken from the Place Survey 2008.

4) Health – Data from the Place Survey 2008

5) Economic Wellbeing – Sources: IMD2007, Unemployment (Claimant Count)- rate is % of resident working age population (NOMIS) & Census 2001(Econ Activity & Ind. of Employment)

6) Housing – Sources: House Price - Land Registry 2008, Census 2001 & Place Survey 2008 (Satisfaction with home).

7) Education – Sources: GCSE, Education, NCC, Census 2001 (No Quals.) & HESA 2009 (HE).